

## *Banning-Beaumont Elks Lodge #1839*



March 2022

### A Word From Our Exalted Ruler- Brian Morrissey

#### A Big Thank You

Our lodge is approaching the end of its March 31, 2022, fiscal year. The year started a little shaky but wound up well. This didn't just happen by chance but by the efforts of several people who were committed to keeping the lodge going. I would like to recognize those folks at this time.

Carl and Beverly Wolfram

John Richards

Janet Morrissey

Jack Kesner

Greg and Delene Gonzales

Larry Oswald

Bob and Alice Contreras

Royal Schuck

Gary Shupe

Judy Golding

Jacquelyn Atwood

Justin Golding

Lorinda Cornell

Tom and Dee Wilkey

Penny Wyckoff

Ruby Nevarez

Michael Curtis

Billy Brotherton

Doug McCombs

Dave Bostic

Cyndi Fleck

Gene Davenport

Ron and Vicky Elisalda

George Foote

Jackie Solomon

Denny and Betty Goff

Brigg and Kelliey Matthews

Bill Meidinger

Joyce Bryant

Bill Ray

Hopefully, I didn't miss anybody. Thanks for all you did during the year to support the lodge. Thanks, also, to all our members who supported our Tuesday and Friday night dinners. We couldn't have done it without you. Let's all continue to support our lodge activities and make our next lodge year even better.

Fraternally

Brian Morrissey/Exalted Ruler

## A Word From Esteemed Lead Knight- Janet Morrissey

### **Dwell in Possibility** ---- Emily Dickinson

Many years ago, I saw an airport billboard with the following statement: "The Power of Possible." For some unknown reason, I began collecting phrases with the idea of possible.

Audrey Hepburn said it clearly, "Nothing is impossible. The word itself says, ` ` I'm possible."

Oh, and you remember Alice----Alice in Wonderland when she discussed her frustrations with the Queen, "I cannot believe impossible things."

"I dare say you haven't had much practice," said the Queen, "When I was your age, I always did it for half an hour a day. Why, sometimes I've believed as many as six impossible things before breakfast."

Can you think of one idea for our Elks that would seem to be impossible? It seems as if there are so many physical plant problems alone without considering any others. At our last meeting, the following needs were brought to the attention of the Board of Directors: the ancient dishwasher had stopped working again; a leak in the roof over the kitchen; and a toilet in the women's bathroom had stopped working. That was at one meeting, but I remember when I was on the board 10 years ago, and the same problems needed to be addressed. The biggest one at that time was the roof. One wants to throw up their hands and say, "Impossible," but something always happens that seems like a small miracle. Two of our Board Members agreed to purchase a new toilet and split the cost. It's Possible.

The dishwasher has been a pain for all these years, so now we have to address the possibilities of getting a new one----thousands of dollars. The Brunch on March 5th will have all of its proceeds deposited to purchase the dishwasher. Also, donations are always accepted from a member for a designated purpose. We have had members step up on numerous occasions: fixing the RV electrical problems and a variety of other needs in the back 40; women and men volunteering to serve on Tuesday and Friday night dinners; cooking a meal on Tuesday night and furnishing the supplies;

members are coming in to clean the Lodge; members supporting the Lodge in a variety of ways such as raffles; volunteers waiting tables; fixing all kinds of problems within and outside our Lodge. Thank you for all that is being done to support and improve our Lodge. With you and me, it's all possible.

Janet Morrissey

## House Committee Chair- Carl Wolfram



Happy birthday to all of our Lodge Members who are celebrating another year this month. To celebrate with you our bartenders have your name and a free drink waiting.

This month we toast:

Bob Stilson	Steven Muccillo	Rodney Sossman
Gary Wilhelmson	Majed Alkaraisha	William Meidinger
Lynn Derrick	Ron Kington	Chris Ramos
Samuel Fuller	Bob Contreras	William Rayner
Mike Nevarez	Rosco Funkhouser	Tom Hargreaves
David Puckett	David Law	Larry Oswald
Diane Vellis	Chris Hansen	
	Linda Pope	

As we move into March, we appreciate your continuing support each week of our dining and bar. The House Committee is faced with many challenges with the rising costs of food and liquor. We are working every week to maintain the prices. I'm sure that you are also experiencing the same inflationary problems at home. We will maintain the current pricing as long as possible, but we will need to charge market prices on some items. We also need new equipment in the kitchen. We installed a new ice maker this month and are looking to replace our dishwasher as soon as possible. We will be opening the bar at 4:00, and dinners will still be served at 5:00. We will stay open as long as there are members in the lodge.

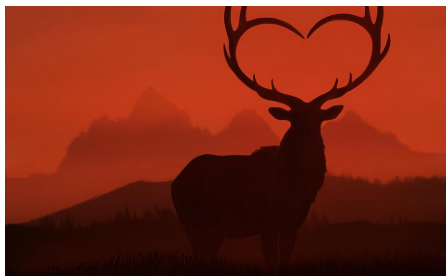
We will start the month with a spaghetti dinner on March 1, which is always popular. Our spaghetti crew will be serving. Please plan to attend. Tacos and tostadas are back this month and will be served

on March 29th. Bob and Alice will be serving. We will also be celebrating St. Patrick's Day on Tuesday, March 15, with a special corn beef and cabbage dinner.

One more date to put on your calendar will be the installation of your officers on March 23. Social hour will start at 5:00, followed by the installation at 6:00. Please plan to attend and support your new officers.

Our House Committee will be looking forward to seeing you at the lodge.

Carl Wolfram



## Valentines Dinner and Dance

Thank you to all who participated in our Valentine's Dinner and Dance. The food was terrific, and the music kept everyone up and on the floor. A special thanks to our volunteers, House Committee, and the Ladies of the Redlands Elks Lodge for taking the time to decorate and serve. Through our Opportunity Drawing, we raised the remaining funds for our Scholarship Program for the two local high schools in the Banning/Beaumont area.

### Meatloaf Lunch

Thank you to the Hemet Elks Lodge for requesting a special luncheon of Carla's Meatloaf. Our House Committee came in on a snowy Wednesday afternoon and served the luncheon, which allowed the lodge to bring in extra funds for the month. Thank you again to Judy, our bartender, for making the special trip out. The snow was a bonus.

### Membership Dues

Please be on the lookout for your Annual Dues notice. These are due and payable before the end of the month. If you have any questions regarding your dues or arrearages, please contact Gary Shupe at the Lodge Office.

## Flag Decommissioning Ceremony



Please join us on **Friday, May 13, 2022**, for a Flag Decommissioning Ceremony outside our lodge. The United States Code stipulates, “When a U.S. flag is in such condition that it is no longer a fitting emblem for display, it should be destroyed in a dignified way, preferably by burning.” We gather these Flags of our Country and our States, which have been determined to be no longer serviceable. Following the ceremony we will have food available under the night spring sky.

## ANNUAL ELKS DEEP PIT BBQ



Coming up on **May 14, 2022**, our Lodge will be holding its **Annual Deep Pit BBQ**. This is a big event and huge fundraiser for the Lodge, and its success is 100% dependent on all of our Lodge Members. Please consider how you can make this year's event enjoyable and profitable for all who participate. There are many areas for you to be involved:

- **Committee Member/ Team Leader**
- **Pit Crew**- Start and manage Fire Pit
- **Meat Management**- Wrapping Meat and Cutting Meat
- **Set Up**- This includes Tables, Chairs, etc.
- **Breakdown/Clean up**- After the event and trash pick up during.
- **Ticket Sales**- Before the event and during
- **Beer and Wine Sales**-Working a shift during the event
- **Food Service**-Working a shift during the event serving and replenishing food
- **Donations**-Approaching local businesses for donated items to be raffled during the event
- **Contributor**- Making a cash donation to the event to purchase meat and supplies

Please contact Kellie Matthews if you would be interested in taking part. We need the members of our Lodge to take part in this time honored tradition that has been absent for the past 3 years. Contact Kellie [kellmatthews68@gmail.com](mailto:kellmatthews68@gmail.com).

## NEW OFFICERS

On March 23, 2022 we will be installing the New Officers for the 2022-2023 year. Please join us by welcoming those who have been newly elected to serve our Lodge.

Carl Wolfram - Exalted Ruler

Delene Gonzales - Lead Knight

Brigg Matthews - Loyal Knight

Robert Contreras - Lecturing Knight

Joyce Bryant - Treasurer

Kelliey Matthews - Secretary

1 year Trustee - Kevin Norville

2 year Trustee - Janet Morrissey

3 year Trustee- Michael Curtis

4 year Trustee- Brian Morrissey

5 year Trustee - Alice Contreras

Esquire - Greg Gonzales

Inner Guard - Jackie Atwood

House Committee Chairperson - Ron Elisalda

## ELKS.org Website

Our Website has been updated, and photos from the past few months have been added. Please take a moment and go to [Elks.org:: Lodge #1839 Home](https://www.elks.org/Lodge-1839-Home) and check us out. Any news or photos you may have to add to the website or newsletter. Email Kelliey Matthews @ kelmatthews68@gmail.com by March 30, 2022, to be included in April's Newsletter.

## CONTACTS

**Brian Morrissey, Exalted Ruler** (951) 203-5652

**Carl Wolfram, House Chair** (951)634-5885

**Janet Morrissey, Lead Knight** (951)845-6740

**Royal Schuck, Camp Host** (714)800-3606

**Gary Shupe, Secretary** (909)730-7454

*March 2022 Banning-Beaumont Elks Lodge #1839*

Sunday	Monday	Tuesday	Wednesday	Thursday	Friday	Saturday
<b>Brunch and Bubbly Tickets are on sale this week.</b>		1 <b>Spaghetti Dinner \$10</b>	2 <b>Trustees Mtg. 5pm</b>	3	4 <b>Fish or Jambalaya</b> Doors Open at 4:00 pm Dinner served 5-6:30 pm	5 <b>Brunch &amp; Bubbly @ 10 am</b> Tickets for Sale at the Bar \$10 Mimosas \$2
6	7	8 <b>RV Mtg 4 pm</b>  <b>Bbq Beef, ColeSlaw and Beans</b>  Doors open at 4:00 pm Dinner 5-6:30	9 <b>Lodge Meeting - 6pm</b>	10	11 <b>Fish or Steak</b> Doors open at 4:00 pm Dinner 5-6:30 pm	12
13	14	15 <b>Corned Beef and Cabbage Dinner</b> Doors open at 4:00 pm Dinner 5-6:30	16	17	18 <b>Steak or Shrimp Scampi</b> Doors open at 4:00 pm Dinner 5-6:30 pm	19
20	21	22 <b>Stuffed Pork Chops</b> Doors Open at 4:00 pm Dinner 5-6:30 pm	23 <b>Lodge Meeting at 6pm</b> Officer Installation Doors Open at 5pm for Drinks and Appetizers 6pm Installation	24	25 <b>Beef Stroganoff or Fish</b> Doors open at 4:00 pm Dinner 5-6:30 pm	26
27	28	29 <b>Taco or Tostada</b> Doors Open at 4:00 pm Dinner 5-6:30 pm	30	31		