



Y E A R - E N D DONATION PROCESSING TIMELINE

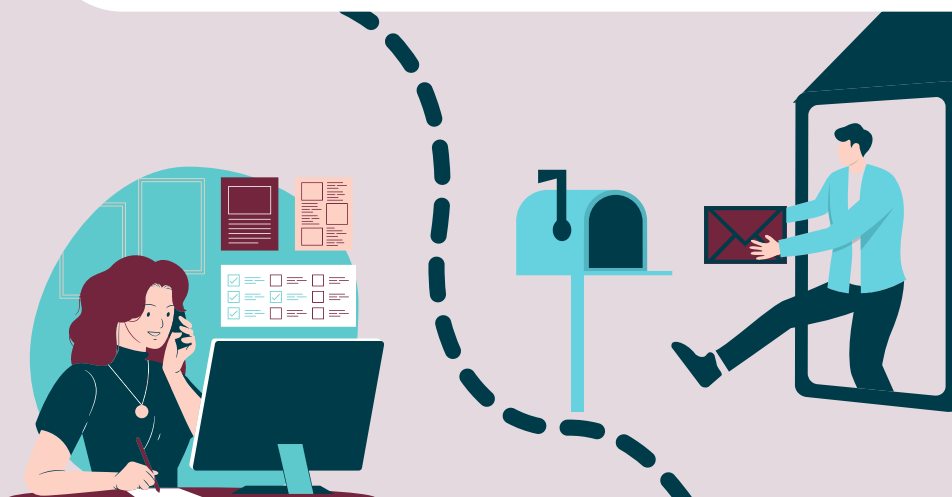
& why you should wait to apply for your Gratitude Grant

1

Donations are sent to the ENF

When you donate online, the ENF can start processing immediately.

When you mail a check to the ENF office, the donation will be subject to potential mail delays.



Heads up!

Due to IRS guidelines, donations must be in the ENF office by March 31 to count for the current fiscal year. Postmarks do not count. The best way to ensure your donation gets in on time is to give online!

The ENF processes the donations

After a donation is received, it can take **up to two weeks** to process.

2

The ENF closes the fiscal year

All donations that are received on or before March 31 are used to calculate each Lodge's per-member-giving totals, as well as any Gratitude Grant bonuses the Lodge qualifies for.

The results can take up to ten business days to finalize.

3



Wait until all donations are processed, around mid-April, before submitting your Gratitude Grant application!

The ENF's CIP office issues Gratitude Grants to qualifying Lodges

Lodges that apply and qualify for a Gratitude Grant will be reviewed by the CIP office.

Each Lodge's Gratitude Grant total is based on the amount they qualify for **at the time of applying**. Grant funds cannot be added retroactively after an application is submitted.

4

5

You finish the 2024-25 fiscal year strong!

And your community benefits from your work!

