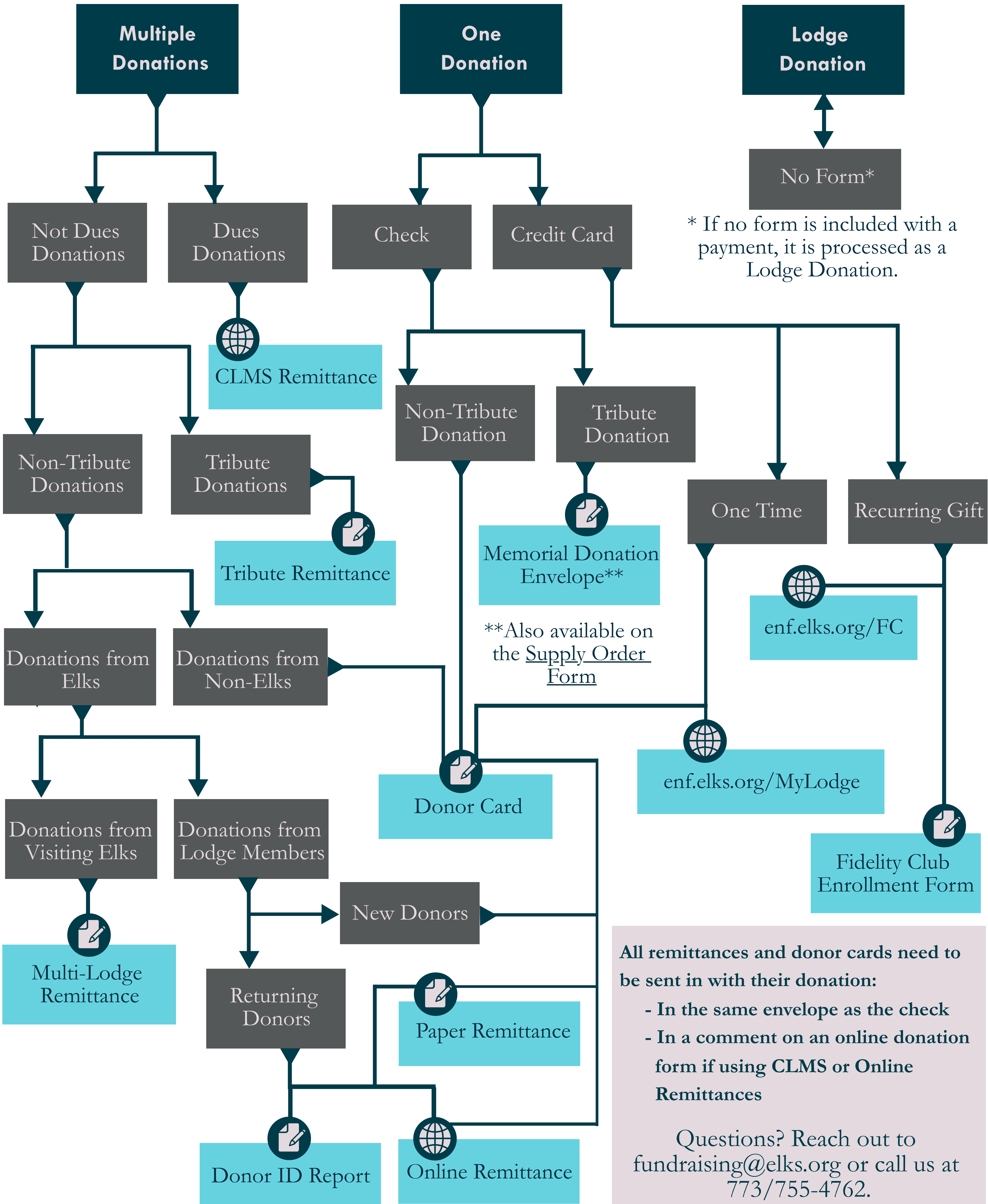


ENF's Remittance Form Map

Don't know which donation form to use? Follow the flowchart to find the remittance form that best suits your donations.



Elks
National
Foundation, Inc.



All remittances and donor cards need to be sent in with their donation:

- In the same envelope as the check
- In a comment on an online donation form if using CLMS or Online Remittances

Questions? Reach out to fundraising@elks.org or call us at 773/755-4762.