

# OUR BUILDING PROGRESS



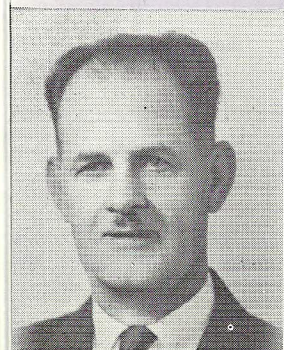
**JOHN S. HARE**  
1931-1932



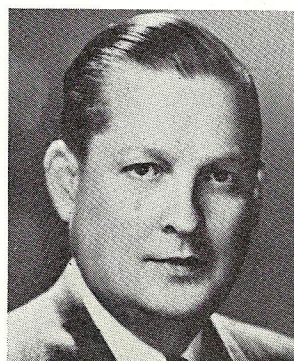
**AL. BROADHURST**  
1932-1933



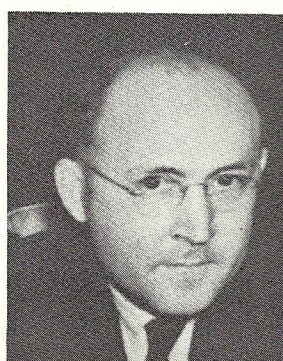
**V. E. BERG**  
1933-1934



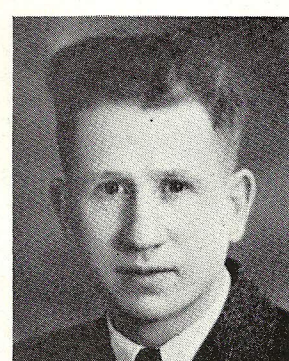
**E. E. SWISSELM**  
1934-1935



**JOE E. HURST**  
1935-1936



**WM. J. JACKSON**  
1936-1937



**E. M. COLE**  
1937-1938

The pride of home ownership, the goal of every fraternal organization, was definitely lacking when the New Philadelphia lodge of Elks was organized on June 22, 1899.

The founders of the organization were content to hold their business meetings in I. O. O. F. hall and their social affairs in the banquet room of the Exchange hotel, and it was not until the Alexander block was erected on the public square in 1900 that the trustees leased the entire third floor. It remained the home of the organization for the next 28 years.

As all the activities of a small city take place in the public square, and with the Elks occupying a "grandstand seat", members of No. 510 were not interested in a home of their own.

However, in 1911 a motion was made instructing the trustees to devise ways and means to purchase the DeGrief property, now the site of the Masonic Temple in West High Avenue. No action was ever taken on the motion.

First concrete evidence that the lodge would consider a home of its own was noted in 1915 when the Home and Site committee was ordered to purchase the Engle property on North Broadway, now occupied by the Heller Drug Store, for \$8,500.

An architect presented plans for a three-story building, but, when the members showed a lack of interest in buying stock for the project, the deal fell through. On October 12th, 1918, the trustees sold the Engle property to the late Charles Lintz for \$14,750.

On April 19th, 1921, a new building committee consisting of Homer G. Frew, V. O. Mathias, R. W. Emerson, J. U. Horgner and N. C. Parr was appointed, and on September 12th, 1922, an option was taken on the McGregor home on North Broadway the Shriver property on East High street and the Snyder property, present site of the Quaker theatre.

The Shriver property was purchased on September 19th, of the same year, for \$17,500. Later, the present home site was ordered sold, but the highest bid of \$20,000 was refused.

Another home site, the Porter property on Second street, SE., was later purchased by the trustees for \$8,500, and again the Shriver site was ordered sold. But the members definitely decided to build on the Shriver site and the Porter property was sold at a loss to the lodge of \$1,000.



## (OUR *B*UILDING PROGRESS)

Negotiations were at a standstill for several years, until January 4, 1927, when Exalted Ruler Wm. T. Beddows appointed A. L. Limbach, John C. Thomas, L. R. Click, together with trustees Kirkwood Glauser, Harry Burnside and O. F. H. Kaserman, as a building committee.

The Phidelk Company, an incorporated holding company, was formed and plans were immediately made for the erection of a new home. The Phidelk Company was voted all the funds of the lodge and plans were drawn for a new \$30,000 home.

The cornerstone of the present structure was laid September 30, 1928, and the home was dedicated on June 14, 1929, with Past Grand Exalted Ruler John G. Price officiating at both sessions.

Following World War II, when the membership increased from 350 members to the present 750, it was necessary to seek relief from the crowded conditions of the present building.

On January 21, 1947, the Phidelk Company, including L. R. Click, president; Joe E. Hurst, vice president; Frank R. Hurst, secretary; Arthur Getz, treasurer; Dorren Renner, Charles E. Becker and John S. Hare, made a report to the lodge that plans were ready for an addition to the present building.

Six different sets of plans were submitted to the lodge on March 8, 1947, and, after a stormy session, a plan was accepted which included bowling alleys, and the Phidelk Company was ordered to proceed with the erection of the annex. Bids were submitted but, because of building conditions, no contractor was interested in the project.

On May 25, 1948, the members moved to delete the bowling alleys and proceed with other improvements. The general contract was let on June 14 with a completion date of November 1st promised.

After a year of grief the building was finally completed and the average member is certain that it was worth waiting for.

The completed annex contains a new bar and cocktail lounge, a modern kitchen with sufficient equipment to serve 600, steam room, shower baths, locker room, a complete new heating system, air conditioning throughout the entire building and an auditorium with seating capacity for 600 with ample stage room for entertainments.

Entrance can be gained from the east side of the structure or from the parking lot on the roof of the building. The parking lot contains space for 50 cars.

### PAST EXALTED RULERS



**DORREN L. RENNER**  
1944-1945



**CHAS. E. BECKER**  
1943-1944



**Carl D. Waddington**  
1942-1943



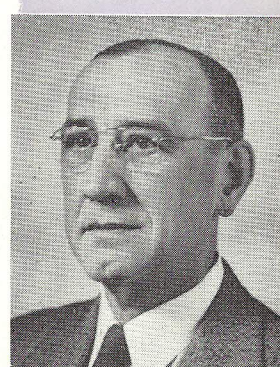
**L. D. HART**  
1938-1939



**FRANK R. HURST**  
1939-1940

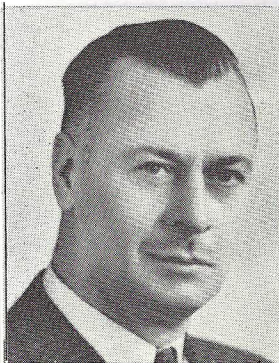


**CARL E. GEIB**  
1940-1941

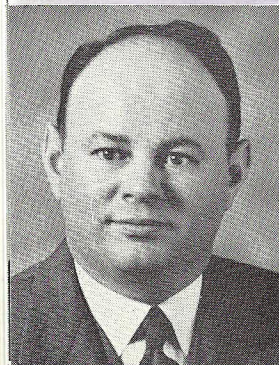


**DALE EMPFIELD**  
1941-1942

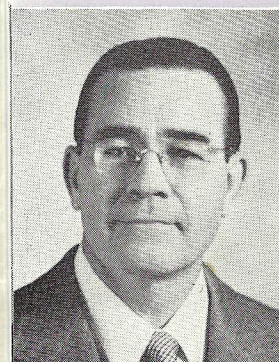




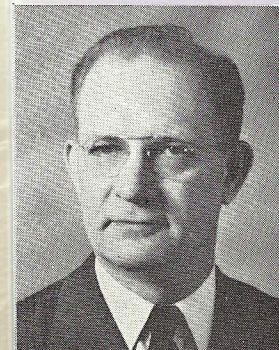
**Lester B. Stonebrook**  
1945-1946



**RAYMOND C. RICE**  
1946-1947



**DONALD J. KIRK**  
1947-1948



**RALPH F. SPIKER**  
1948-1949

## AIDS STATE ACTIVITIES

That New Philadelphia lodge rated high in the minds of the leaders of the Ohio Elks Association is proven by the fact that when that organization wished to try out an idea it used the members of No. 510 as "Guinea Pigs" before coming to a final conclusion.

Way back in 1900, when No. 510 was the baby lodge in the state, the first meeting of the Association was held in Cleveland and while the officers were confident that the larger lodges were sold on the idea it remained to be seen whether the smaller lodges would go along.

With that thought in mind, the second meeting of the Association was held in our city and it proved a wonderful success. With less than 100 members a carnival club was formed and a twelve-acre tract of land adjacent to North Broadway was leased. Members constructed a ten foot fence around the entire plot, piped city water and constructed sewers to the show grounds. The entrance was at what is now Poplar street and First Drive, NW.

Immediately inside the gate was an immense steam gondola, the only one of its kind in the world, and the field to the left was lined with booths which held displays of local business men.

At the right of the entrance was the midway with its "German Village", numerous dancing girl shows, "Lunette, The Flying Lady", Dr. France's "Chamber of Horrors", "Chinese Village", "Well Dancer", and Bostock's Wild Animal Show.

The local boys did such a good job of entertaining the visiting Elks that the business end of the reunion was neglected and a resolution was passed prohibiting any lodge entertaining the association from promoting outside attractions such as carnivals, etc.

Again in 1931, when leaders of the Ohio Elks Association decided to inaugurate a Spring Conference, they naturally turned to New Philadelphia and the Elks who journeyed to our city for this event were entertained for a three-day period. The meeting was climaxed on Sunday when a flag pole was presented and dedicated at Schoenbrunn state park and a class of candidates was initiated by the Hamilton lodge degree team, state ritualistic champions.

Each succeeding meeting has grown in attendance until it overshadows the fall meeting at Cedar Point.

In 1936, upon an invitation from our lodge, the state president of the Ohio Elks Association and his corps of officers visited No. 510, and State President's Night, now a state wide activity, was inaugurated.

At the second such event a degree team composed of past state presidents initiated a class of candidates in honor of the state president. Clyde Reasoner of Zanesville acted as exalted ruler; Blake Cook, Kent, leading knight; George Doerzbach, Sandusky, loyal knight; Wm. Brunning, Cleveland, lecturing Knight; Wm. Campbell, Lorain, esquire; Charles Casselman, Alliance, chaplain, and Albert Dawson, inner guard.

The latch string is always out and No. 510 is eager and willing to try out any activity the Association has to offer.