

BENEVOLENT AND PROTECTIVE ORDER OF ELKS

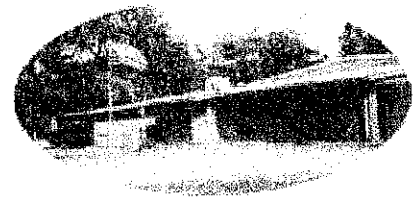
January
2025

News & Views

"Elks Care - Elks Share"

SLIDELL ELKS LODGE NUMBER 2321

P. O. Box 5445
SLIDELL, LOUISIANA 70469
PHONE: 985.641.1266 ~ FAX: 985.641.5809



EXALTED RULERS MESSAGE

HAPPY NEW YEAR! 2024 flew by and 2025 is here! Wishing everyone a joyous, prosperous and healthy new year.

Hope everyone thoroughly enjoyed our annual NEW YEAR'S EVE DANCE in the Hall with Witness playing from 8 PM to 12 AM. The crowd enjoyed dining, dancing, party favors, confetti, toasting with champagne and spreading good cheer, well wishes to one and all that night. Thanks to PER Dee Christian for chairing this entertainment event again last year. It was another wonderful success!

Speaking of the new year, it will soon be time to nominate our new elected officers for the coming 2025-26 lodge year. There will be three meetings in February in order to accomplish nominating members to positions. I encourage everyone to consider being nominated to fill the eleven elected positions and four appointed positions. There are also many chairperson and committee assignments available to fill as well by the incoming administration. While it may seem like a daunting task, it is truly a rewarding experience to serve your lodge as an officer, chairperson or committee member. It is really important for interested candidates to attend the Feb 2nd PER Breakfast at IHOP, 9 AM to state your intentions; attend and put forth nominations on Feb 11, 18; and ultimately vote at February 25's Election of Officers meeting to make your voice heard. Every vote counts that night to ensure the lodge has capable leadership and experienced personnel ready for continued success in the 2025-26 lodge year. The lodge has been on a very solid financial footing for the last five years and we have been able to fund and accomplish several major remodeling and upgraded projects to our building facilities.

Tina and I wish you and yours a Healthy, Happy New Year.

ER Lee Guillory / 985-290-9974 / leeg4700@bellsouth.net

AUXILIARY MESSAGE

Happy New Year!

Thank you to all of our members for all of the wonderful help in the kitchen, and around the Lodge during 2024. It is our members, and volunteers who keep the mission of community alive.

Our Elkette of the month for January is a lady who helps in the kitchen for many activities. She comes out for veteran's functions and she helps decorate for many Elk and auxiliary activities. Thank you, **Carol Daigle**, for all your help.

Thank you to **Mary Clark, Paula Clark, and our Auxiliary Members** for all the help with the Student Wellness bag donations, and Student Christmas Adoption program support. Also, great job to our Elks and Elkettes for a successful Veterans Basket deliveries for Christmas.

Birthday Greetings go out to Judy Hanrahan, Janet Lacombe, Barbara Rice, and Nancy Rousset. Happiest of Birthdays Ladies!

Remember that the Lodge will be closed on January 1st, and our next meeting will be on Monday, January 6, 2025 at 7:00PM. See you then! I hope that this New Year brings everyone health, wellness, and a renewed steadfast spirit.

Christy Masson – Auxiliary President



ELK OF THE MONTH FOR JANUARY JOAN MOODY

Joan has performed numerous functions including active involvement in the Veteran's program working at the veteran's bingo luncheons; delivering gift baskets, encouragement and a friendly smile to veterans at nursing home and assisted living facilities on 12-14-24. She has also regularly worked Wednesday bingo sessions and some Friday bingo with Mark. Someone had to be there to keep Special Man Jay straight! Joan's friendly attitude and personality is enjoyed by all who come in contact with her. Thank you, Joan and Mark, for sharing your time and talent with us all.

Polo Shirts and Baseball Hats:

If interested in ordering a Slidell Elks shirt [Polo] or hat [Twill or mesh styles], please contact Alaina Miller at 985-774-1910 asap to place your order. The shirts will be screened with the Slidell Elks logo on the front and back and your first name will be embroidered on the left front of the shirt. The cost of shirts will vary depending on size, color and if you want it with or without a pocket. Prices start at \$28 for shirts and \$14 for hats. Alaina must have a minimum order of 12 items before she places the order with Mirror Image. [Prices are always subject to change].

Upcoming Events:

January 1 – New Year's Day [Lodge and Bingo Closed]
January 3,10,17,24 & 31 - Friday Bingo
January 8,15,22 & 29 – Wednesday Bingo
January 5 – Last Saints game vs Tampa Bay Bucs
January 6 – Board of Directors & Auxiliary Meetings
January 14 – Vote Meeting
January 18 – Mid-Season Conf. @ Opelousas Lodge
January 25 – Orientation, Steak Your Way Dinner and Overboard playing in the lounge.
January 28 - Initiation Meeting
February 2nd – PER breakfast @ IHOP
February 3 – Board of Directors & Auxiliary Meetings
February 9 – Superbowl Party
February 11 – PER Night, Nomination of Officers
February 14 – Valentine's Day, Krewe of Titans and Bingo
February 15 – Krewe of Bilge and Poseidon
February 16 – Krewe of Antheia
February 18 – Nomination of Officers
February 23 – Krewe of Dionysus
February 25 – Initiation Meeting and Election of Officers
February 28 – Krewe of Selene, Bingo Closed

March 3 – Lundi Gras GER Dinner @ Lodge #30

March 4 – Mardi Gras [Lodge Closed]

March 8 – Law and Order Night Banquet

March 29 – Elks Awards Banquet

CFP Championship and Superbowl Party:

The College Football Playoffs (CFP) are being held in December and January. This is an exciting time to watch the 12 playoff teams compete for the first time in this CFP format and make it to the quarterfinals, semifinals, bowl games on January 1st and 2nd; and ultimately the CFP Finals. Dates and times to be determined. Make plans to attend our annual Lodge Superbowl party on Sunday, February 9, 2025, at 5:30 PM. Come cheer on your favorite team[s]; enjoy some excellent food, fun, and pools. Always a good time for food, fun and fellowship. Unfortunately the Saints will not be in this year's game in the Caesar's Superdome.

Men's Restroom Renovation Project

The much-needed men's restroom renovation project started demolition approximately November 21st and was completed in record time on Monday, December 16, 2024. It was opened in time for the Troop 315 BSA Winter Court of Honor ceremony on December 16th. Many thanks and kudos to Jeff and Nancy Cooksley for assisting me with the final clean-up and mopping for the big reveal. PER/Leading Knight Jimmy Crippin, David Crippin and an excellent team of contractors, supplies, and vendors ordered materials and supplies early; accelerated their crews' labor and schedules such that the project could be completed by our December 31st New Year's Eve Dance goal. They beat that optimistic schedule by 2 weeks! Thank you for your patience and understanding from the temporary inconveniences caused by the construction.

NEWS & VIEWS

Monthly Publication
B.P.O.E. #2321, Slidell, LA
(985) 641-1266 Normal
(985) 641-5809 After 4 p.m & Weekends
Email: BPOE2321@aol.com

2024-2025 LODGE OFFICERS

Exalted Ruler..... Lee A. Guillory
Leading Knight James Crippin, Jr.
Loyal Knight..... Jesse Howard
Lecturing Knight Rick Wooley
Secretary Wayne Landry
Treasurer Jan McAllister
Esquire Mark Moody
Chaplain Samuel Masson
Inner Guard Kenneth Howell
Tiler Shaun Rueggar

BOARD OF TRUSTEES

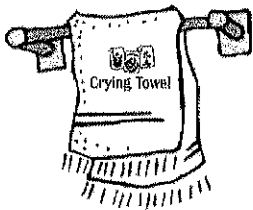
1 Year Trustee Keith Rossignol
2 Year Trustee William Graff
3 Year Trustee Randy Bergeron
4 Year Trustee Deidre Christian
5 Year Trustee Hope Bald

SECRETARY'S HOURS

Monday - 10:00 AM to 3:00 PM
Wednesday - 9:30 AM to 2:30 PM
Meeting nights - 6:30 PM to 9:00 PM
All others by Appointment only

**PROPOSITIONS
FOR MEMBERSHIP**

Pending applicants will be posted on the bulletin board; candidates interviewed; and processed during the month.



Crying Towel

- 11-26-24 Rick Calderone #2435
- 12-10-24 Debbie Maxwell #2835

There are many upcoming lodge meetings in January and February to enhance your chances of winning. Attend, place your dollar in the bucket and hope for your name to be called. Must be present at the meeting to win \$\$\$\$.

Membership:

We started this lodge year at 209 members; and we have initiated some more throughout the year bringing our membership rolls up to 221 at the end of December. There have been some quality members added this year that immediately stepped-up and became active involved members. However, with the removal of delinquents for non-payment and an inordinate number of deaths this year, we are starting January 2025 with a net of 209 members; or +0. Let's push the virtues and advantages of lodge membership from January through March so we can close-out the lodge year at +1 or better. Keep the excitement and momentum rolling into the new lodge year.

Most Valuable Student [MVS] Scholarship Program.

Chairman Dee Christian and her committee of Dave Caldwell and Hope Bald recently received, reviewed and scored 18 MVS scholarship applications received online through the Grand Lodge. They have evaluated them; picked our top 3 local boys and girls apps; and sent those onward for LEA State competition. Slidell 2321 will award ten \$1,000 Lodge MVS scholarships; ER Lee and Tina Guillory will fund an 11vth one for \$1,000; and the Elks Auxiliary will add two additional \$500 scholarships. That is a phenomenal amount of \$12,000 in scholarships this year. Can't wait to see who the winners are when revealed at the Elks Awards Banquet in March. The Legacy Award scholarships are also in play with a deadline in February.

LEA Mid-Season Conference

LEA State President Wayne Landry, and Slidell Lodge #2321 invite you to attend the one-day Mid-Season Conference in Opelousas, LA on Saturday, January 18, 2025. It will be held at Opelousas Lodge 1048, located at 207 North Union Street, Opelousas, LA.

LEF TRUSTEES 10:00 - 10:15 AM
LEA TRUSTEES 10:15 - 10:30 AM
Lunch Served 11:15 - 11:30 AM
Business Meeting 12 PM until...complete.

Please contact ER Lee Guillory ASAP to let me know if you are attending so I can notify Opelousas ER Shane Garrard with a headcount of attendees.

"MY ELKS" app

This app will keep you connected to 'you!' lodge with real-time updates and reminders, event calendars, volunteer opportunities and nearby lodge locations - ALL ON YOUR PHONE!!

Use this QR code or search "MyElks" in the Google Play or Apple Store, today.



If you have any questions, contact Star (985.534.0082).



B.P.O.E. ELKS #2321
P. O. Box 5445
Slidell, Louisiana 70469
Address Service Correction Requested

NON-PROFIT ORG.
 U.S. POSTAGE
 PAID
 Slidell, LA
 Permit #69



January 2025



SUNDAY	MONDAY	TUESDAY	WEDNESDAY	THURSDAY	FRIDAY	SATURDAY
			1 Happy New Year Lodge Closed No Bingo	2	3 Bingo 7:00 PM Kitchen: Randy H	4
5 SAINTS vs Tampa Bay 12:00 PM	6 Auxiliary & Board Meeting 7:00 PM BSA 315 Meeting 7:00 - 8:00 PM	7	8 Bingo 11:30 AM Kitchen: René	9	10 Bingo 7:00 PM Kitchen: Tina	11 YR - GSA 30274 Meeting 10 AM - 1 PM Hall - GSA Service Unit Cookie Rally Kickoff 12-6 PM
12	13	14 Vote Meeting 7:00 PM	15 Bingo 11:30 AM Kitchen: Randy H.	16	17 Bingo 7:00 PM Kitchen: Christy	18 Mid-Season Conf. Opelousas 10:00 AM untill Hall STARC Party 4:30 - 8:30 PM
19	20 MLK Holiday BSA 315 Meeting 7:00-8:45 PM	21	22 Bingo 11:30 AM Kitchen: Randy H.	23	24 Bingo 7:00 PM Kit: Dee/Wanda	25 Orientation 6:00 PM Steak Your Way 7:00 PM - \$20 Overboard
26	27 BSA 315 Meeting 7:00-8:45 PM	28 Initiation Meeting 7:00 PM	29 Bingo 11:30 AM Kitchen: Randy B.	30	31 Bingo 7:00 PM Kit: Randy - Lynn	