

A Message From Our Exalted Ruler



To all members officers and committees In April we used the rest of the Grant money and did an Easter Basket for Veterans and First Responders.

Thanks to all the volunteers. Our lodge will thrive when the members are engaged and volunteering, We as officers are committed to listen, help, and support the Wilmington Elks lodge 532. We are working on platforms to better the communication on events and all projects and committees within our lodge. Please be on the lookout for this in the next couple months. Together we can make a meaningful and positive impact on our community and veterans and youth.

“Be The Difference!”

Charles Beal

Exalted Ruler





Meals on Wheels



On Sunday, April 12, Wilmington Elks Lodge volunteers came together once again for **Weekend Meals on Wheels**, preparing and delivering meals to **145 local seniors**. Each delivery represented more than nourishment—it was a reminder that our neighbors are seen, cared for, and valued.

This month's home-cooked menu included roasted Italian-marinated chicken thighs, rice pilaf, and our own take on corn O'Brien, along with yeast rolls, pudding for dessert, and bottled water. As always, meals were prepared and delivered with care, teamwork, and pride.



As this program continues to grow, we welcome additional members who may be interested in joining the team. Just a few hours once a month helps us serve **135–150 seniors**—and it's a rewarding way to connect with fellow Elks while making a meaningful impact.

If you'd like to volunteer, please contact:

- ✉ **Shawn Carr** – scarr55@ec.rr.com
- ✉ **Valrie Horton** – v.horton30@gmail.com
- ✉ **Lu Viola** – lgmar2000@yahoo.com

Heartfelt thanks to everyone who cooked, packed, cleaned, delivered, donated, or supported this effort. Your generosity helps ensure every meal is delivered with dignity and compassion.

Antler Alerts: Your Monthly Secretary Update

Dear Brothers and Sisters,

We're one month into the 2026–2027 Lodge year—an excellent time to pause and share a few important updates on membership, charitable giving, dues, and upcoming events. Thank you for being an active part of Wilmington Elks Lodge #532. We're off to a great start!

Membership Update: 2025–2026 Fraternal Year

As reported at our April 9 regular meeting, the Lodge experienced positive membership growth during the past fraternal year.

- We began the year on April 1 with **461 members**
- **70 members were added**, including:
 - 51 new initiations
 - 15 affiliations by Dimit or Certificate of Relief (COR)
 - 4 reinstatements
- **47 members were lost** due to nonpayment of dues, expulsions, or dimits

We ended the 2025–2026 fraternal year with **484 members**, a **net gain of 23 members**.

Congratulations to our top recruiter, Jennifer Magill, who sponsored **eight new members** this past fraternal year. Thank you for your dedication to growing our Lodge!

Charitable Giving Highlights: 2025–2026

As shared at our April 23 regular meeting, we are proud to report on an exceptional year of service to our community for the Lodge year ending March 31, 2026. These accomplishments reflect the generosity and commitment of our members and volunteers.

- **Over 10,400 individuals served** through youth, veterans, patriotic, community service, and recognition programs
- **More than 10,800 volunteer hours contributed**
- **Over 55,000 miles traveled** in support of charitable activities
- **\$17,597 in non-cash donations** and **\$50 in cash contributions** reported

Upcoming Orientation & Initiation

Our next **New Member Orientation** will be held on **Thursday, May 14, at 5:30 PM**, followed by **Initiation** during our regular Lodge meeting at **7:00 PM**.

- If you know someone who may be interested in joining the Elks, please encourage them to apply—we're always happy to welcome new members into our Elks family.

(Next Page)

Key Impact Highlights

- **Youth Programs:** 280 young people supported through educational and enrichment activities
- **Veterans Services:** Nearly 1,000 veterans served through extensive volunteer efforts and donated resources
- **Community Service:** Over 220 individuals assisted through food basket programs, supported by more than \$8,400 in donated goods
- **Community Recognition:** More than 7,500 individuals reached through recognition and outreach efforts

These numbers represent countless acts of generosity, compassion, and teamwork—and they clearly demonstrate the meaningful difference our members make every day. Thank you to everyone who contributed time, talent, mileage, and resources in support of our mission.

2026–2027 Dues Reminder

Membership dues for the **2026–2027 Lodge year are now past due**. If you have not yet renewed, we encourage you to do so at your earliest convenience.

Payment options:

- **Online (credit card):** Visit www.elks.org/payonline and search “Wilmington” or “532”
- **Check or cash:** Use the locked mailbox outside the Secretary’s office

Your continued membership helps Wilmington Elks Lodge #532 serve our community, support veterans, empower our youth, and uphold the values of Elkdom. Every member truly matters.

If you have questions or concerns regarding your membership, please don’t hesitate to reach out.

Thank you for your continued support of Wilmington Elks Lodge #532. Whether you’re volunteering your time, welcoming a new member, or keeping your dues current, your involvement makes a meaningful difference. Please don’t hesitate to reach out if you have questions, updates to share, or need assistance—I’m always happy to help. I look forward to another great year of Elkdom with you all.

Valrie Horton

Secretary

secretaryelks532@gmail.com



Women’s Auxiliary News:

We would like to thank everyone for supporting our Bake sales on BINGO NIGHTS !!! This Helps The LODGE in Many ways. If you would like to join the Auxiliary Please Call

Women’s Auxiliary Elks
Sandra Privette President
1-910-233-6029



Lodge
Meeting



Lodge meeting Nights are
May 14th & 28th, Please show
your support and attend.



STEAK NIGHT EXTRAVAGANZA
IS AT YOUR WILMINGTON ELKS LODGE AND
IT'S EVERY 3RD THURSDAY OF THE MONTH!!!

MAY 21st
(MUST PREORDER BY MAY 19th)

RIBEYE, PETIT FILET, OYSTERS, SHRIMP, BAKED
POTATO, SALAD AND TEA!!!

COME JOIN US FOR AN INEXPENSIVE MEAL

Help Us Pilot a New Email & Text Messaging System

We've heard you! Over the past several months, members have shared feedback—both directly and through social media—about Lodge communications. Concerns about consistency, delivery, and timing have not gone unnoticed, and we appreciate everyone who has taken the time to speak up. In response, Wilmington Elks Lodge #532 is preparing to launch a new communication system that will include **both email communications and SMS (text message) alerts**. This system is intended to improve how reliably members receive important Lodge news, event reminders, and time-sensitive updates.

Volunteers Needed for Pilot Group (by May 15)

Before the system is rolled out Lodge-wide, we are forming a **pilot group** of members to help test it and provide practical, real-world feedback. If you've offered suggestions, raised concerns, or shared frustrations about Lodge communications, **this is your opportunity to help shape the solution**. Members who have voiced feedback are strongly encouraged to participate and be part of improving how we communicate as a Lodge.

Pilot group volunteers will:

- Be among the first to receive test emails and text messages
- Share feedback on clarity, timing, and usefulness
- Help fine-tune the system before full implementation

The pilot group will be finalized by **May 15, 2026**. The pilot itself will begin **after the system is finalized**, and volunteers will be contacted with next steps at that time. If you'd like to participate, please email **Valrie Horton, Lodge Secretary**, at secretaryelks532@gmail.com by May 15.

Constructive feedback is most effective when paired with participation—and with your help, we can build a communication system that works better for everyone.



ELKS LODGE #532 PRESENTS

YOUTH WEEK

Celebrate our youth during Youth Week,
May 1 - 7, 2026! For high school students,
age 14-17.

SATURDAY, MAY 9 AT 12 PM

Essay contest, soccer shoot, and hoop
shoot! Mayor Bill Saffo will talk about the
importance of youth and their involvement
in the community.

If you'd like to help, please contact
LouiseMcColl18@gmail.com.




Save the Date!

Flag Day Service 2026

Mark your calendars and get ready to celebrate Old Glory! Wilmington Elks Lodge #532 is proud to host our **Annual Flag Day Ceremony** on:

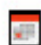
 **Saturday, June 13, 2026**


 **11:00 AM**

Flag Day is one of our most meaningful patriotic events of the year—and last year, more than **100 people** joined us to honor the history and symbolism of the American flag. This year, we're aiming even higher and hope to welcome an even larger crowd for this special celebration.

Want to Help Make It Happen?

Planning is officially underway! The Flag Day Committee will hold its **first planning meeting** on:

 **Monday, May 11**

 **5:30 PM**

All members are welcome to attend and help plan this important event. Whether you enjoy organizing, decorating, public outreach, or simply lending a hand, your ideas and energy are appreciated. Many hands make light work—and a memorable ceremony!

Stay tuned for more details as plans come together, and please invite family, friends, and neighbors to join us as we honor our flag and the values it represents.

Let's make Flag Day 2026 our best yet!

Questions or interested in helping plan Flag Day? Please contact Valrie Horton, at v.horton30@gmail.com.



Lodge Initiation



Upcoming Orientation & Initiation

Our next orientation for new members will take place on **Thursday, May 14th at 5:30 PM**. Initiation will follow during our regular meeting at **7:00 PM** the same evening. If you know someone interested in joining the Elks, please encourage them to apply.



ELK NATIONAL FOUNDATION (ENF)

As we see throughout the year, the ENF helps so many different projects around the world. Remember just because you are not in the Lodge there is still many ways for you to donate. Check out this website at elks.org/ENF/login or create a login and start donating today. Remember the mission of ENF is to help Elks build a stronger community. We fulfill this pledge by investing in our community where Elks live and work. We help youth develop lifelong skills, help send students to college, meet the needs of today's veterans, support the charitable work of the State Elks Association, and fund projects that improve the quality of life in local Elks Communities.



dianegleasondesigns

Come on Down!

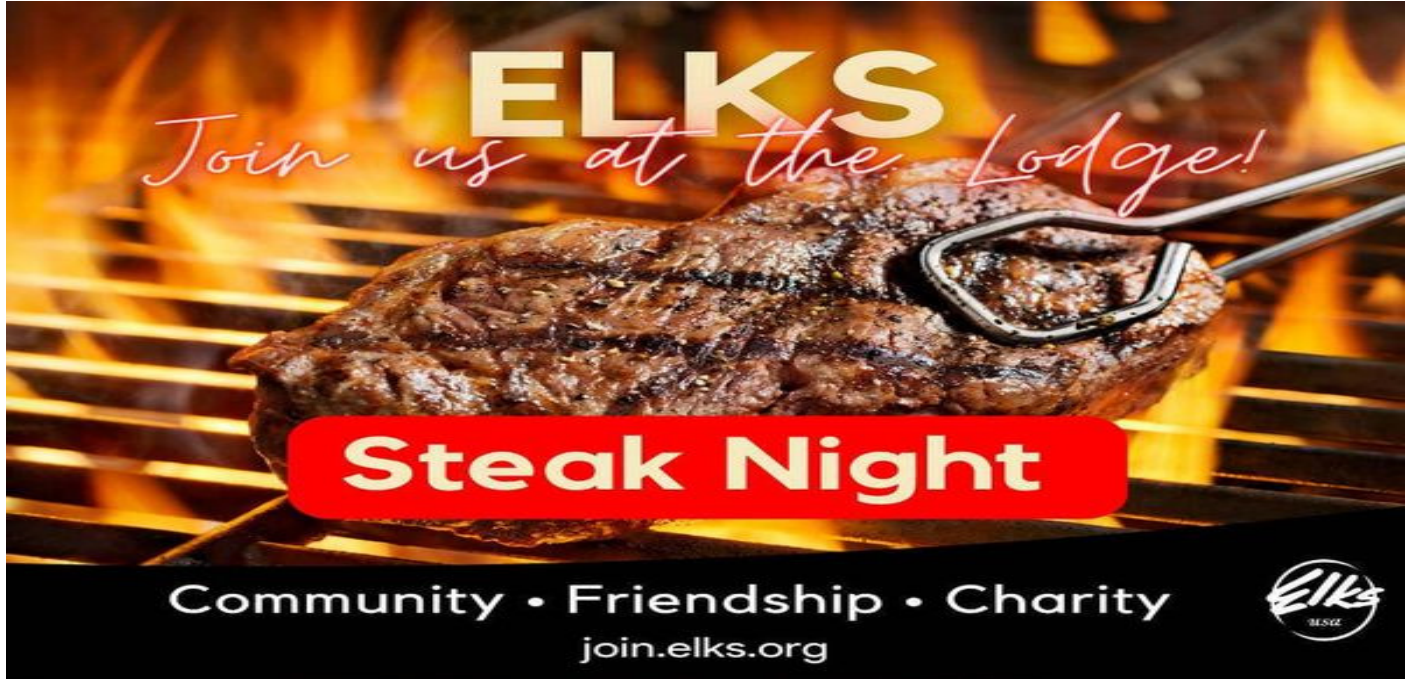
EVERY FRIDAY AT 12 NOON!!!!



Mothers Day Dinner on May 10th At 2 pm

We will be having Shrimp Kabobs Rice
Pilaf Mothers eat free Guests will pay 25
dollars ~ Tickets at the bar





If you have been shopping lately, you have seen an increased price with everything that we serve to our members and guests. We have tried to maintain our current pricing structure for our Steak Night so that we can continue to give you and your guests a reasonably priced steak or seafood dinner. Even with some of the increases in food costs, we have been able to maintain our current prices by shopping at various locations and taking advantage of the monthly sales. But the prices have continued to rise, some quite rapidly, and we now find it necessary to increase the price of our Steak Night dinners. **Starting with our Steak Night on December 18, 2025, the prices will be increased to the following:**

Filet \$21.50Ribeye \$19.75.....Shrimp Dinner \$15.50
 Oyster Dinner \$19.50Shrimp/Oyster Combo \$20.25
 Oyster w/ Steak \$15.00.....Shrimp w/ Steak \$10.50

Wilmington Elks Lodge No. 532

Place your name on a piece of Elk history

As we did several years ago, we will again make brass name plates for your favorite seat in the lodge room, to be installed on the arm of that particular seat. The cost will be \$100.00. Proceeds from this fundraiser is as follows: One half of all proceeds will go to the Wilmington Scholarship Fund, the other half will be for other charity purposes, designated by the lodge in general. Please fill out the bottom portion of this form along with your check/ money order, made out to :

Wilmington Elks Lodge #532 (memo name plate)

Thank you for your support

Please **PRINT** name as it will appear on Brass Name Plate:

(Please check spelling before you submit this form)

Please print YOUR name and telephone # here

Question please call Bruce Benoit (910) 228-1718

Bruce

ACTUAL
SIZE

**it's 5 o'clock
somewhere**



**Bring a Friend Friday
at the lodge**

See YOU there.

AMERICA'S ORIGINAL SOCIAL NETWORK

Good Friends
Good Food
Good Times



Find out what's cooking at your lodge

CALENDAR OF EVENTS

MAY 2026

SUN	MON	TUE	WED	THU	FRI	SAT
					1 TACOS	2
3	4 BINGO	5 LUNCH SPECIAL	6 HOT DOGS Nurses Appreciation	7 PER MEETING 6:30 p	8 TACOS	9 YOUTH WEEK AT 12 PM
10 MEALS ON WHEELS Mothers Day Lunch	11 BINGO	12 LUNCH SPECIAL Dixie's Movie Night HOUSE COMM MEETING 5:30p	13 HOT DOGS	14 LODGE MEETING 7:00 p	15 TACOS	16
17	18 BINGO	19 LUNCH SPECIAL	20 HOT DOGS B.O.D. MEETING 6:30P	21 STEAK NIGHT 6:30 p	22 TACOS LUNCH LINE DANCING AT THE BAR 6-9 p	23
24 CHURCH MEALS ON WHEELS	25 BINGO	26 LUNCH SPECIAL	27 HOT DOGS	28 LODGE MEETING 7:00 p	29	30
31						



LODGE OF SORROW

Living or dead, Elks are never forgotten, never forsaken. Morning and noon may pass them by, the light of day sink heedlessly in the west, but ere the shadows of midnight shall fall, the chimes of memory will be pealing forth the friendly message, "To our absent members"

**Paul Vision
Institute**
Drs. Paul, Taylor, Casey & Robertson

COMPLETE EYE CARE
for the ENTIRE FAMILY!

910-256-6364
1613 Military Cutoff Road
Wilmington, NC 28403

**ADVERTISE YOUR
BUSINESS HERE**

IT'S JUST A SMALL PRICE

**Independent
Insurance
Agent**

AZALEA
INSURANCE SERVICES, INC.

**Trusted
Choice**

Phone: (910) 799-8611
Fax: (910) 297-9592
Cell phone: 910-237-4603
Email: rphillips@azalea-insurance.com
www.azaleainsurance.com

ROBERT D. PHILLIPS
Insure With Confidence
4835 Peachtree Avenue
Wilmington, N. C. 28403

Can we be of service to you?

Wilmington Lodge #532
5102 Oleander Drive
Wilmington NC 28403
(910) 799-2365

E-MAIL: wilmingtonelkslodge532@gmail.com

Tatler E-MAIL: tatler532@gmail.com

If you need to be added to the email list to receive the Tatler, if you are not receiving the monthly Tatler or names, birthdays, posted dates or any info is incorrect please email: tatler532@gmail.com

**Like us on our Facebook page: Wilmington Elk's Lodge #532
Check our Facebook page and your Email for daily updates**



Here to help