



# Pearl Harbor National Memorial

---

Pearl Harbor is the most popular visitor attraction in Hawaii with more than 1.6 million visitors per year.

---

Less than half a million of the 16 million WWII veterans are still alive.

---

Some 350 members of our greatest generation die daily.

---

The number of USS Arizona survivors is down to three.

---

We need to preserve the history that defines our nation.

# PEARL HARBOR HISTORIC SITES

**USS Arizona Memorial**  
The USS Arizona Memorial is a floating structure that commemorates the attack on Pearl Harbor. It is a National Historic Landmark and is open to the public.

**USS Bowfin Submarine**  
The USS Bowfin is a World War II submarine that is now a museum. It is the only submarine to have been awarded the Presidential Unit Citation.

## Plan Your Visit

There are four sites, and each can take approximately 2 hours to see.

If you have time before or after your USS Arizona Memorial tour, consider visiting one or more of the other Pearl Harbor Historic Sites. Visit all the sites and enrich your understanding of America's role in World War II.

**National Park Service Visitor Center**  
Open Daily 7:50 a.m. - 5:00 p.m.

**Tickets and Tour Times**  
Tickets are required for all sites and are available at the visitor center ticket junction.

**Ford Island Shuttle**  
The USS Arizona Memorial has set tour times. You may visit other sites at your leisure.

**Bag Policy**  
No bags or other items that allow concealment are allowed into Pearl Harbor Historic Sites.

**Bag storage** is available for a fee at the USS Bowfin Submarine Museum and Park.

## World War II Valor in the Pacific National Monument

Established on December 3, 2008, this national monument is dedicated to preserving the memory of the sacrifices made by servicemen and civilians in the Pacific theater throughout World War II. The Japanese attack on Oahu on December 7, 1941, resulted in the death of 2,330 Americans, and it threw the United States into World War II.

**Site Information**

**General Admission**  
Allow at least 2 hours

**Audio Tour**  
Based for Covers story and the 17P tour at the USS Arizona Memorial. Available in multiple languages.

**USS Arizona Memorial**  
Allow at least 2 hours

**USS Oklahoma Memorial**  
Up to 1 hour

**Waterfront Memorial**  
Monuments to each of the 13 U.S. submarines and more than 7,500 American submariners lost during World War II.

**Submarine Museum**  
About 1/2 hour

**Open daily 7:00 a.m. to 5:00 p.m.**

- Snack Shop
- ATM
- Bookstore
- Restrooms

## USS Bowfin Submarine Museum and Park

Visit the World War II submarine Bowfin, which survived nine war patrols, and learn what life in the "Silent Service" was like for her 66 crew. You can also visit outdoor exhibits in a four-acre park, a museum devoted to the history of the U.S. submarine force, and a memorial honoring the American submariners and their crews lost during the war.

**Site Information**

**General Admission**  
Admission free to USS Bowfin Submarine Museum

**Audio Tour**  
Included with your visit to the museum. Separate full-hour tours of submarine and museum. Returns what life in the "Silent Service" was like.

**Waterfront Memorial**  
Monuments to each of the 13 U.S. submarines and more than 7,500 American submariners lost during World War II.

**Submarine Museum**  
About 1/2 hour

**Open daily 7:00 a.m. to 5:00 p.m.**

- Snack Bar
- Bag Storage
- Gift Shop
- Restrooms

## Battleship Missouri Memorial

The USS Missouri was the last U.S. battleship ever built and the only one to survive. World War II ended on the Missouri in September 2, 1945, with a formal ceremony and the signing of the Japanese surrender. You can visit the battleship on-site and see much of the ship as you tour. Guided tours provide historical context to what you see.

**Site Information**

**General Admission**  
Allow at least 2 hours

**Audio & Virtual Tours**  
Up to 2 hours

**Guided Tour**  
35 minutes

**Battle Stations Tour**  
2 hours

**Open daily 8:00 a.m. to 4:00 p.m.**

- Restrooms
- Snack Bar

## Pacific Aviation Museum Pearl Harbor

The museum World War II aviation artifacts and exhibits are housed in the historic Ford Island Administration Building. The museum is a National Historic Landmark and is open to the public.

**Site Information**

**General Admission**  
Allow at least 2 hours

**Virtual Tour**  
Up to 2 hours

**Aviator's Guided Tour**  
1 1/2 hours

**Combat Flight Simulator**  
30 minutes

**Open daily 9:00 a.m. to 5:00 p.m.**

- Restrooms
- Snack Bar
- Museum Store
- ATM

# Elks Pearl Harbor Campaign

With contributions from Elks across the country, we can preserve, restore and modernize the USS Arizona Memorial.

These contributions will help honor the service and dedication of Americans whose profound contributions to our nation should never be forgotten, so that generations to come will know and appreciate the enormous sacrifices of the Greatest Generation.

# The Inspiration for the Campaign

By Mike Luhr

Barbara and I had the idea on our Hawaiian visit to see Pearl Harbor Park. As we walked around the park looking at the exhibits, it was apparent the interpretive signs needed attention.

Some are faded worse than others, some are newer than others, some are black & white, and some are in color. All tell the story of what happened that 7th day in December 1941. They show what the harbor looked like then and now, and there is a list of all the vessels in harbor that morning.

I thought it was a shame that these National Park exhibits, which pay honor and respect to the men and women that died that day, along with the tens of thousands of armed service personnel that passed through Pearl Harbor in the Pacific Campaign, were in such a sad state.

The museum was thrilled. And, they had big ideas. Much like the Murrah Bombing Building Museum in Oklahoma City and the 911 museum in NYC, they want to install an interactive display with the pictures and stories of the survivors of that day in 1941.

Our order has a long history of supporting ideas and values that are part of our history; we contributed to the rebuilding of the USS Constitution, we contributed to the restoration of the Statue of Liberty, and now we're coming together for this important cause.

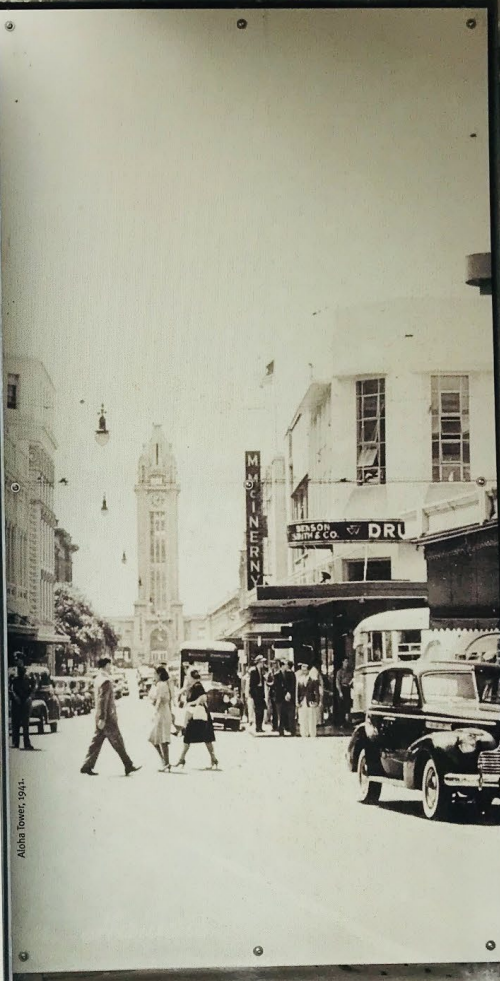
*The next few slides feature the current display.*





**EVE OF WAR**  
The photograph captures a moment of normalcy on a beach just before the war. The large building in the background is the Biltmore Hotel, a landmark in Miami Beach. The scene is filled with people enjoying the sun and sand, unaware of the global events unfolding.

**SUSPICIONS ABOUT LOYALTY**  
This image illustrates the social atmosphere of the time, where suspicion about loyalty was rampant. The Biltmore Hotel, a hub of social activity, became a focal point for rumors and investigations. The photograph serves as a historical record of the era's tensions.



Alpha Tower, 1941.

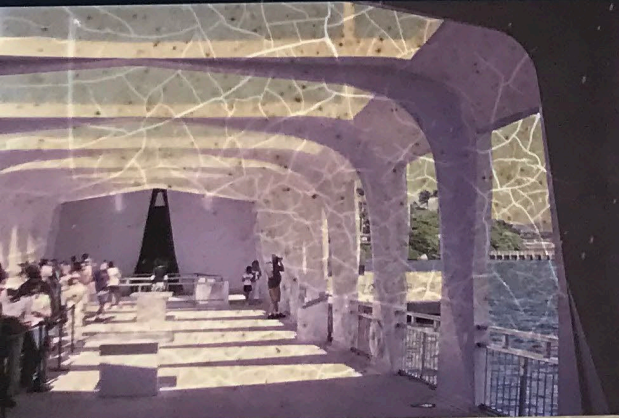
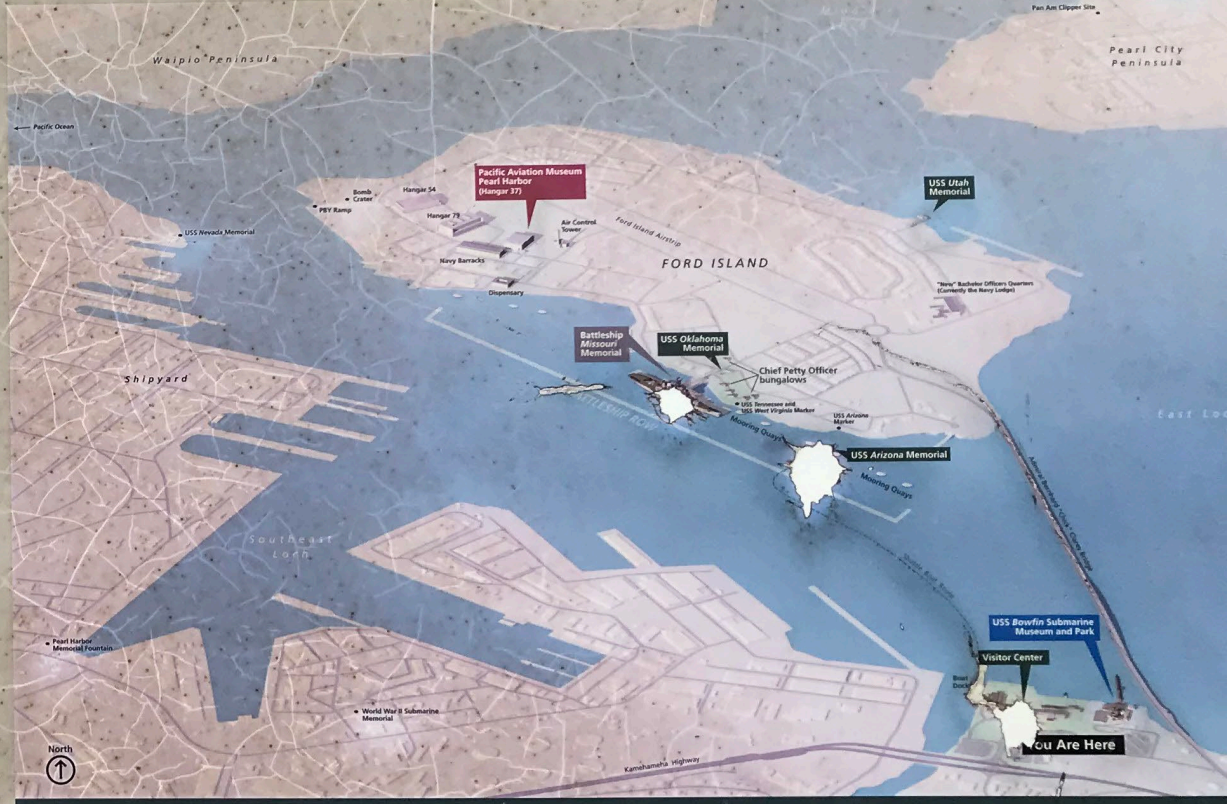
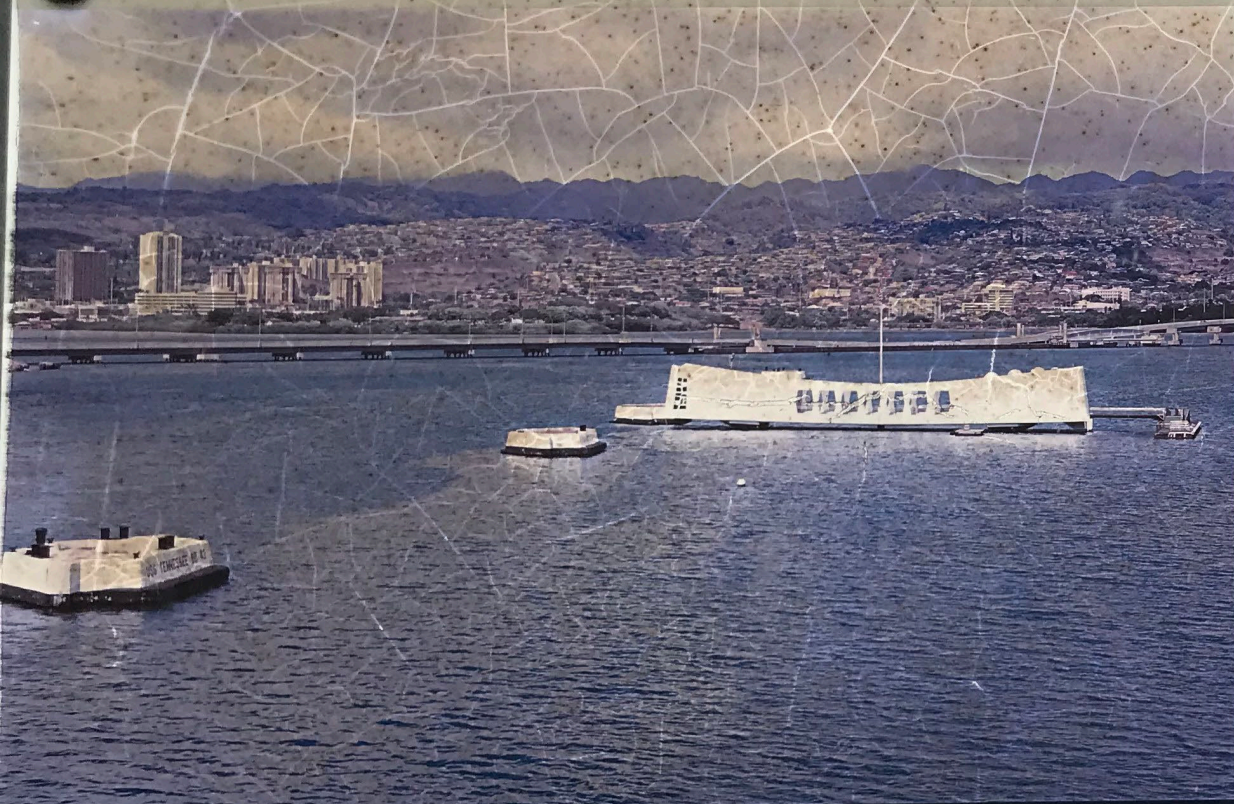






Id, 1941.





## Plan Your Visit

There are four sites, and each can take approximately 2 hours to see.

If you have time before or after your USS *Arizona* Memorial tour, consider visiting one or more of the other Pearl Harbor Historic Sites. Visit all the sites and enrich your understanding of America's role in World War II.

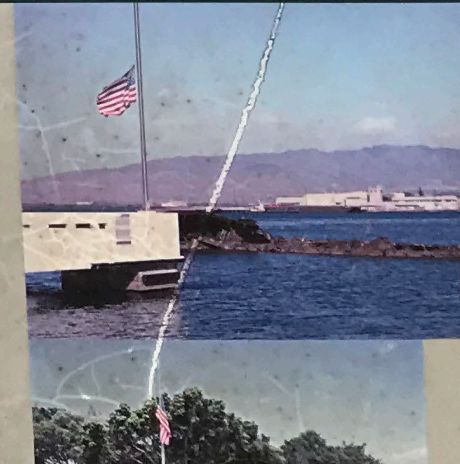
## World War II Valor in the Pacific National Monument

The monument encompasses several sites here and elsewhere. Pearl Harbor sites include the USS *Arizona* Memorial and Visitor Center; the USS *Utah* and USS *Oklahoma* memorials on Ford Island; Battleship Row mooring quays F6, F7, and F8; and six chief petty officer bungalows on Ford Island.

Alaska sites include the Aleutian Islands of Atka, Kiska, and Attu, which mark the northernmost reach of Japanese forces. California sites include Tule Lake Segregation Center National Historic Landmark and Camp Tule

States into World War II. Throughout the Pacific theater over the following four years, epic land and sea battles to reclaim Japanese-occupied islands led to high losses of life for both sides, and for the islands' native peoples. Battlegrounds such as Guadalcanal, Tarawa, Saipan, Guam, Peleliu, the Philippines, Iwo Jima, and Okinawa are remembered for the heroic sacrifices and valor displayed there.

There were also sacrifices on the home front. Tens of millions of Americans rallied to support the war effort, often



# Our Partner: Pacific Historic Parks

- Their Mission: To support the USS *Arizona* Memorial and other Pacific historic locations through education and interpretive programs, research, preservation, and restoration, to perpetuate the memory of events and honor the people involved in these sites.
- A 501(c)(3) tax-exempt public benefit organization.
- The Cooperating Association at 4 National Park sites and the State's Diamond Head State Monument.



# **WHY ARE FUNDS NEEDED?**

# Fundraising Goals

- **\$15,000 – GOAL MET!**
  - Replace old, faded and peeling outdoor exhibits along Pearl Harbor National Memorial's perimeter.
- **\$270,000 – GOAL MET!**
  - Upgrade current static displays with digital exhibits
  - Build new interactive displays to engage children
  - Modernize the Pearl Harbor museums with iPads and touch screens

**All additional funds raised will be used to enhance and expand a virtual education program that will allow youth and adults across the country to “virtually visit” Pearl Harbor and learn about our history.**

The National September 11 Memorial and Museum offers a powerful tribute to the victims of the 9/11 attack in New York City.

The goal is to open a similar exhibit in Hawaii to honor the 1,177 individuals killed Dec. 7, 1941 on the USS Arizona.



A dollar per member is all it takes to truly help preserve history, perpetuate peace and reconciliation and ensure that the memories of our veterans, passed and living, are never forgotten.

**Will you help?**





**For further details, visit  
[enf.elks.org/PH](https://enf.elks.org/PH).**

FAQs

Donations will not count toward your Lodge's ENF per-member-giving total or your personal ENF recognition levels.

Donations will be credited to each donor's record, just as with regular donations to the ENF. However, at this point, the plan is to publicize and display donations by state.

All donations must arrive at the ENF no later than November 11, 2020. This will allow us to tally final totals and present a check to Pacific Historic Parks during their annual Pearl Harbor Day Ceremony on December 7.